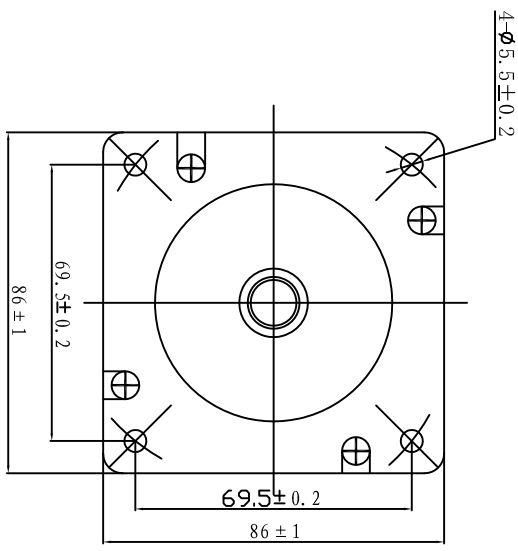
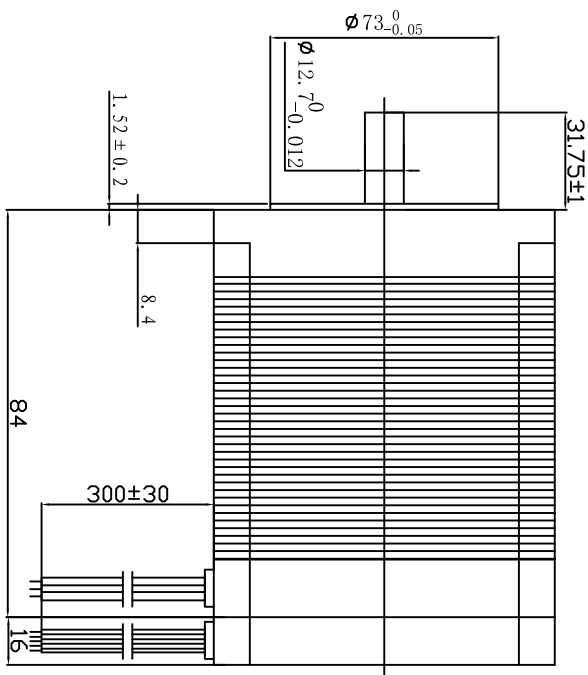
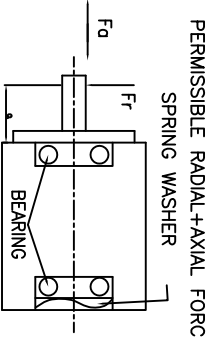


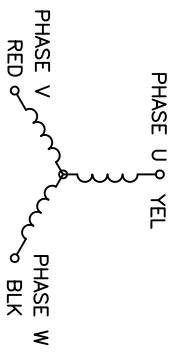
REV	ECN NO.	DESCRIPTION



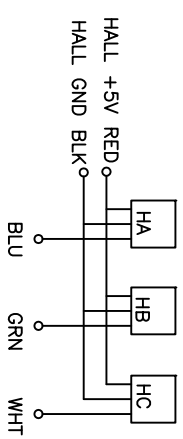
NUMBER OF PHASE	绕组相数	3	Wires for Phases UL1332 AWG18
NUMBER OF POLES	极数	8	PHASE U YEL PHASE V RED PHASE W BLK
LINE TO LINE RESISTANCE	线电阻	0.2±10% ohms@20°C	YEL RED BLK
LINE TO LINE INDUCTANCE	线电感	0.66±20% mH@1KHz	Wires for Hall UL1332 AWG22
NOMINAL VOLTAGE	额定电压	48 VDC	HALL V _{CC} HLU HV HW HALL Gnd
NO LOAD SPEED	空载转速	3400 RPM	RED BLU GRN WHT BLK
NO LOAD CURRENT	空载电流	1.2 A	PERMISSIBLE RADIAL+AXIAL FORCE
RATED TORQUE	额定转矩	1.05 N.m	SPRING WASHER
RATED SPEED	额定转速	3000 RPM	
RATED CURRENT	额定电流	8.27 A	
PEAK TORQUE	峰值转矩	3.15 N.m	
PEAK CURRENT	峰值电流	25 A	
BACK EMF CONSTANT	反电势常数	9.4 Vrms/KRPM	
TORQUE CONSTANT	转矩常数	0.127 N.m/A	
INSULATION CLASS	绝缘等级	B 130°C	AXIAL-FORCE 径向压力 Fo=220 N Max.
DIELECTRIC STRENGTH	介电强度	600VAC 1SEC	DISTANCE 距离 q=20 mm
INSULATION RESISTANCE	绝缘电阻	100MΩhm @500VDC	RADIAL-FORCE 轴向压力 Fr=60 N Max.
ROTOR INERTIA	转子转动惯量	1200 g.cm ²	SHAFT RADIAL PLAY 轴向间隙 0.02mm Max. @450g
WEIGHT	重量	2.64 Kg	SHAFT AXIAL PLAY 轴向间隙 0.08mm Max. @450g
OPERATION AMBIENT	使用环境	Ambient temperature:-20...+55°C, humidity Max. 85% (No condensation)	
STORAGE AMBIENT	存储环境	Ambient temperature:-10...+35°C, humidity Max. 85% (No condensation)	



THREE-PHASE CONNECTING
STAR CONNECTION



HALL CONNECTING



UNLESS OTHERWISE SPECIFIED	MATERIAL	CONTR.	CHECK	DESIGN	DATE	P/N	3.1.02.XXX.XXXX	
TOLERANCES						TITLE	Specifications	
DECIMALS:						USED ON	FL86BL S94	
ANGULAR:						DWG NO.	REV	
±0.5							A	
±0.25								
±0.1								
UNIT: mm	FIRST ANGLE PROJECTION		SCALE	N.T.S	SHEET	1	OF	1
DO NOT SCALE DRAWING								

PULLING MOTOR