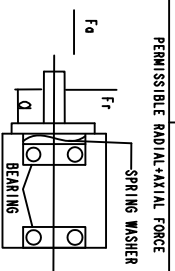


| | | |
|-------------------------|--|--|
| NUMBER OF PHASE | 3 | Wires for phase |
| NUMBER OF POLES | 8 | PHASE U YEL PHASE V RED PHASE W BLK |
| LINE TO LINE RESISTANCE | 0.1±10% ohms@20°C | |
| LINE TO LINE INDUCTANCE | 0.6±20% mH@1KHz | Feedback info |
| NOMINAL VOLTAGE | 48 VDC | 1000p/rev incremental encoder |
| NO. LOAD SPEED | 4100±10% RPM | |
| NO. LOAD CURRENT | 0.7 A | |
| RATED TORQUE | 1.7Nm | |
| RATED SPEED | 3000 RPM | |
| RATED CURRENT | 15A | |
| PEAK TORQUE | 5.1Nm | |
| PEAK CURRENT | 45 A | |
| BACK EMF CONSTANT | 8.4 Vrms/kRPM | |
| TORQUE CONSTANT | 0.113N.m/A | |
| INSULATION CLASS | B/130°C | |
| DIELECTRIC STRENG | 600VAC 1SEC | |
| INSULATION RESIST | 100MΩm @50VDC | |
| ROTOR INERTIA | 1.02Ng.cm ² | |
| WEIGHT | 2.1Kg | |
| OPERATION AMBIENT | Ambient temperature:-20...+55°C, humidity Max. 85% (No condensation) | |
| STORAGE AMBIENT | Ambient temperature:-10...+35°C, humidity Max. 85% (No condensation) | |



FEEDBACK WIRE:

| COLOR | FUNCTION |
|---------|----------|
| RED/WHT | GND |
| RED | Vcc(+5V) |
| BLU | EA- |
| BLU/BLK | EA+ |
| BLK | EB- |
| BLK/WHT | EB+ |
| PUR | I+ |
| GRY | I- |
| BRW | H1 |
| DRG | H2 |
| YEL | H3 |

| | | | | | |
|----------------------------|--------|-------------|--------|------|---------------|
| REV | EQN NO | DESCRIPTION | DESIGN | DATE | P/N |
| UNLESS OTHERWISE SPECIFIED | | | CHECK | | SPECIFICATION |
| TOLERANCES: | | | | | |
| DECIMALS: | | | | | |
| .X ±0.5 | | | | | |
| .XX ±0.25 | | | | | |
| .XXX ±0.1 | | | | | |
| UNIT: mm | | | | | |
| DD NOT SCALE DRAWING | | | | | |
| FIRST ANGLE PROJECTION | | | | | |
| SCALE | | | | | |
| SHEET OF | | | | | |
| DRAWING NO. | | | | | |
| REV | | | | | |
| A | | | | | |
| FULLING MOTOR | | | | | |